

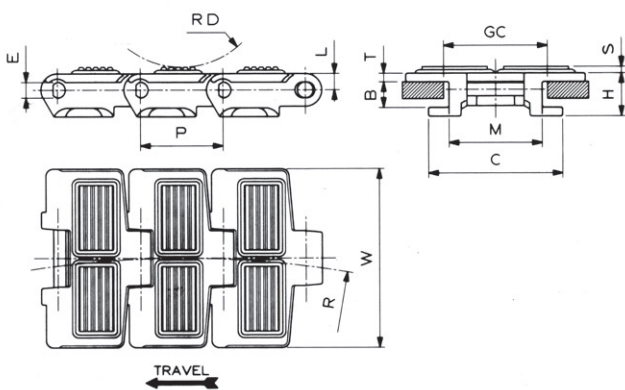
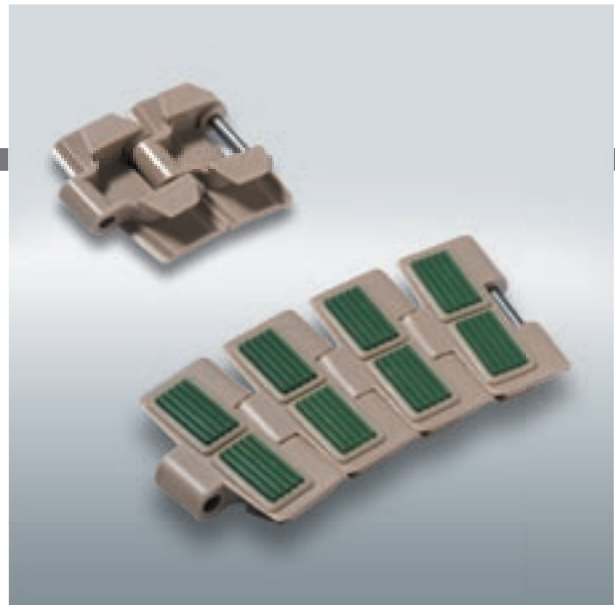


# FliteTop®

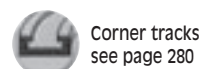
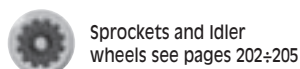
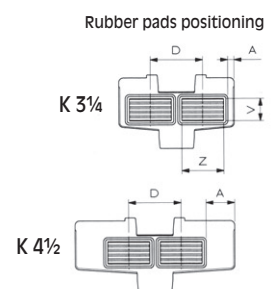
## SIDEFLEXING CHAIN WITH RUBBER SURFACE

### HF 880T SERIES - TAB

Reference	Standard Materials
HF 880T	LW
Pad Material: Thermoplastic rubber (see page 62).	
Pin Material: Cold rolled austenitic stainless steel.	



Dimension	mm	inches
P	38,1	1.5
M	42,9	1.689
C	62	2.441
L	7,6	.299
H	19,9	.783
E	7,05	.278
B	11,9	.469
S	3	.118
V	16	.63
Z	30	1.181
RD	40	1.575
GC (Straight)	46	1.811
GC (Curve)	44,5	1.752



### HF 880T (Sideflexing - Tab - Rubber Pad)

MATERIAL	REGINA REF.	CHAIN WIDTH W		PLATE THICKNESS T		PADS PITCH D		A		SIDEFLEXING RADIUS R		WORKING LOAD (25°C/77°F)		CHAIN WEIGHT	
		mm	inches	mm	inches	mm	inches	mm	inches	mm	inches	N	lbs	kg/m	lbs/ft
ACETAL RESIN (LW)	HF 880T LW K 3 ¼	82,6	3.25	4,0	0.157	37,5	1.476	4,5	0.177	457,2	18	2000	450	1,16	0.78
	HF 880T LW K 4 ½	114,3	4.50	4,0	0.157	37,5	1.476	20,4	0.803	609,6	24	2000	450	1,35	0.91

Standard length: 3,048 m (10 feet)