

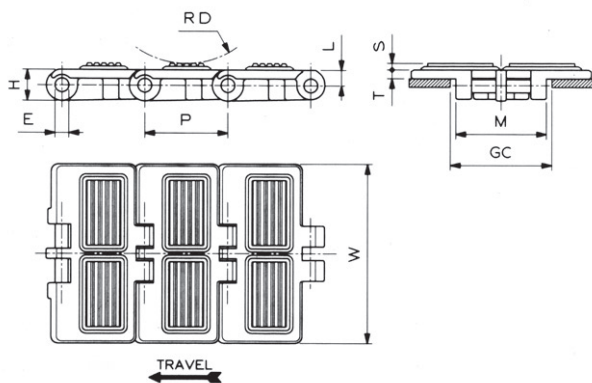
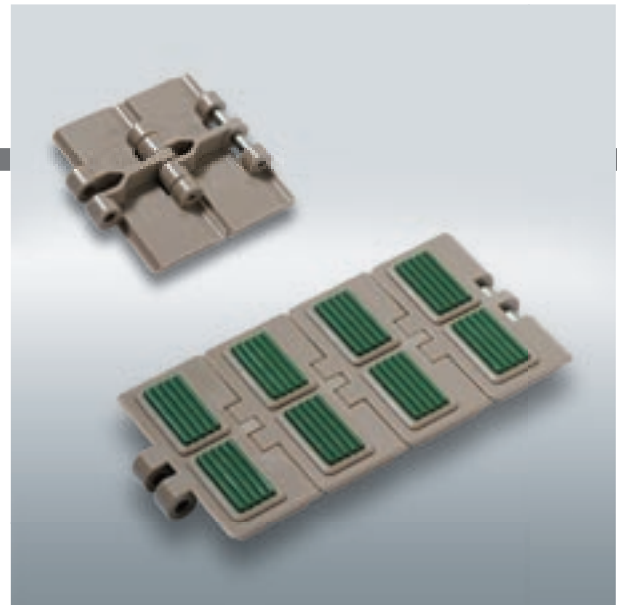


FliteTop®

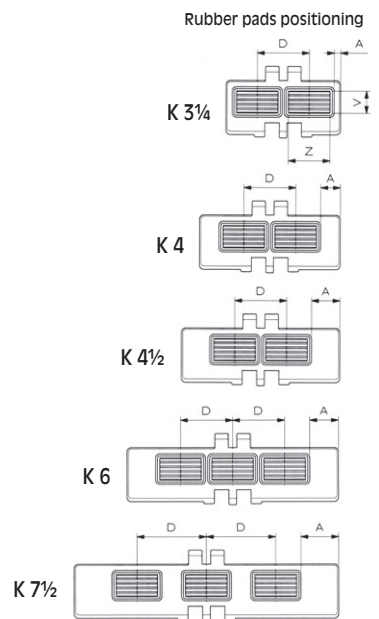
STRAIGHT RUNNING CHAIN WITH RUBBER SURFACE

HF 820 SERIES

| Reference | Standard Materials |
|---|--------------------|
| HF 820 | LW |
| Pad Material: Thermoplastic rubber (see page 62). | |
| Pin Material: Cold rolled austenitic stainless steel. | |



| Dimension | mm | inches |
|-----------|------|--------|
| P | 38,1 | 1.5 |
| M | 41,6 | 1.638 |
| L | 7,2 | .283 |
| H | 14,3 | .563 |
| E | 6,35 | .25 |
| S | 3 | .118 |
| V | 16 | .63 |
| Z | 30 | 1.181 |
| RD | 40 | 1.575 |
| GC | 44 | 1.732 |



HF 820 (Straight Running - Rubber Pad)



Chain material see page 12



Sprockets and idler wheels see pages 196-199



Sprocket positioning see page 299

| MATERIAL | REGINA REF. | CHAIN WIDTH W | | PLATE THICKNESS T | | PADS PITCH D | | A | | WORKING LOAD (25°C/77°F) | | CHAIN WEIGHT | |
|-------------------|-------------------|---------------|--------|-------------------|--------|--------------|--------|------|--------|--------------------------|-----|--------------|--------|
| | | mm | inches | mm | inches | mm | inches | mm | inches | N | lbs | kg/m | lbs/ft |
| ACETAL RESIN (LW) | HF 820 LW K 3 1/4 | 82,6 | 3.25 | 4,0 | 0.157 | 37,5 | 1.476 | 4,5 | 0.177 | 1600 | 360 | 0,97 | 0.65 |
| | HF 820 LW K 4 | 101,6 | 4.00 | 4,0 | 0.157 | 37,5 | 1.476 | 14,0 | 0.551 | 1600 | 360 | 1,09 | 0.73 |
| | HF 820 LW K 4 1/2 | 114,3 | 4.50 | 4,0 | 0.157 | 37,5 | 1.476 | 20,4 | 0.803 | 1600 | 360 | 1,15 | 0.77 |
| | HF 820 LW K 6 | 152,4 | 6.00 | 4,0 | 0.157 | 37,5 | 1.476 | 20,7 | 0.815 | 1600 | 360 | 1,35 | 0.91 |
| | HF 820 LW K 7 1/2 | 190,5 | 7.50 | 4,0 | 0.157 | 50,0 | 1.969 | 27,3 | 1.075 | 1600 | 360 | 1,58 | 1.06 |

Standard length: 3,048 m (10 feet)