



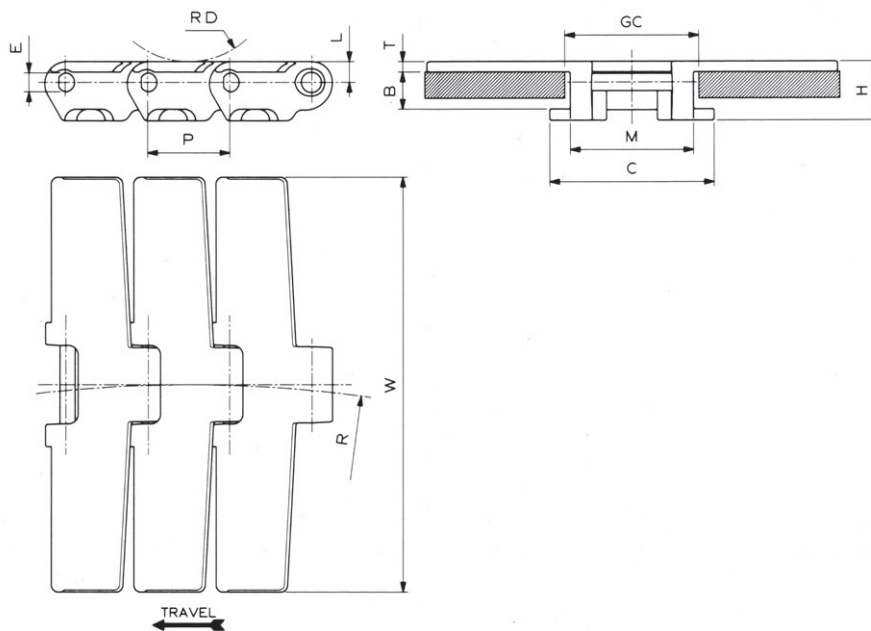
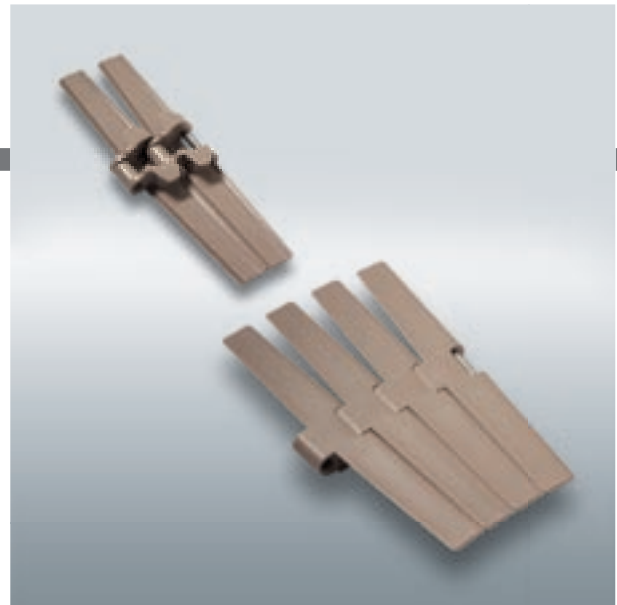
FliteTop®

SIDEFLEXING CHAIN

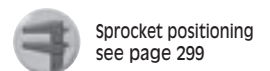
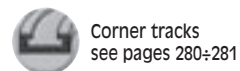
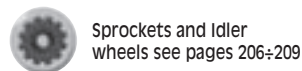
882T SERIES - TAB, HEAVY DUTY 57 mm HINGE

- Reinforced top plate thickness 4,8 mm.

Reference	Standard Materials		
	LW	UP	DK
882T			
Pin Material: Cold rolled austenitic stainless steel.			on request



Dimension	mm	inches
P	38,1	1.5
M	57	2.244
C	76	2.992
L	9,5	.374
H	27,1	1.067
E	8,7	.343
B	17	.669
RD	40	1.575
GC (Straight)	60	2.362
GC (Curve)	60	2.362



882T (Sideflexing - Reinforced Top Plate Thickness - Heavy Duty 57 mm Hinge - Tab)

MATERIAL	REGINA REF.	CHAIN WIDTH W		PLATE THICKNESS T		SIDEFLEXING RADIUS R		WORKING LOAD (25°C/77°F)		CHAIN WEIGHT	
		mm	inches	mm	inches	mm	inches	N	lbs	kg/m	lbs/ft
ACETAL RESIN (LW)	LW 882T K 4 ½	114,3	4.50	4,8	0.189	609,6	24	2800	630	2,00	1.34
	LW 882T K 7 ½	190,5	7.50	4,8	0.189	609,6	24	2800	630	2,43	1.63
	LW 882T K 10	254,0	10.00	4,8	0.189	609,6	24	2800	630	2,72	1.83
	LW 882T K 12	304,8	12.00	4,8	0.189	609,6	24	2800	630	2,95	1.98
ULTRA PERFORMANCE ACETAL RESIN (UP)	UP 882T K 4 ½	114,3	4.50	4,8	0.189	609,6	24	2800	630	2,00	1.34
	UP 882T K 7 ½	190,5	7.50	4,8	0.189	609,6	24	2800	630	2,43	1.63
	UP 882T K 10	254,0	10.00	4,8	0.189	609,6	24	2800	630	2,72	1.83
	UP 882T K 12	304,8	12.00	4,8	0.189	609,6	24	2800	630	2,95	1.98

Standard length: 3,048 m (10 feet)