



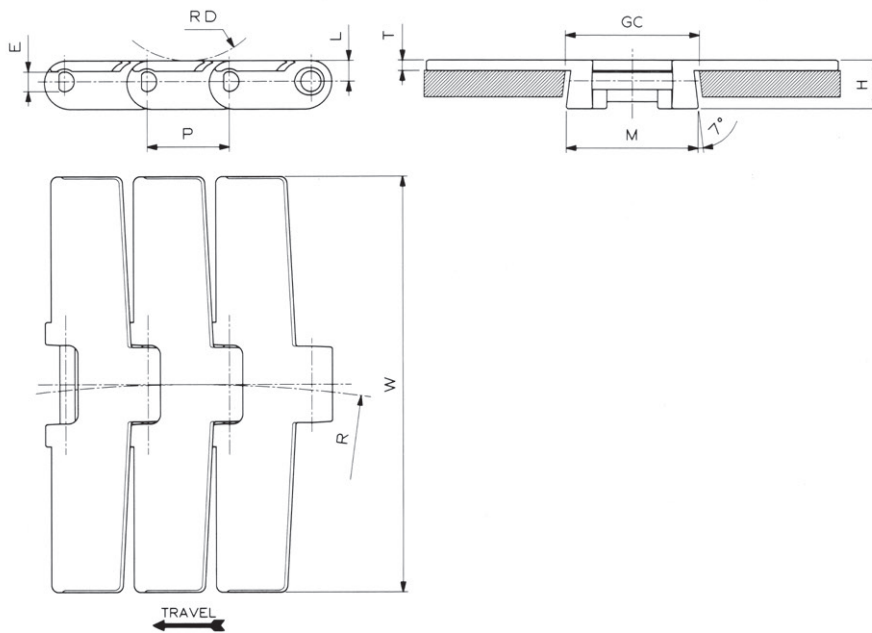
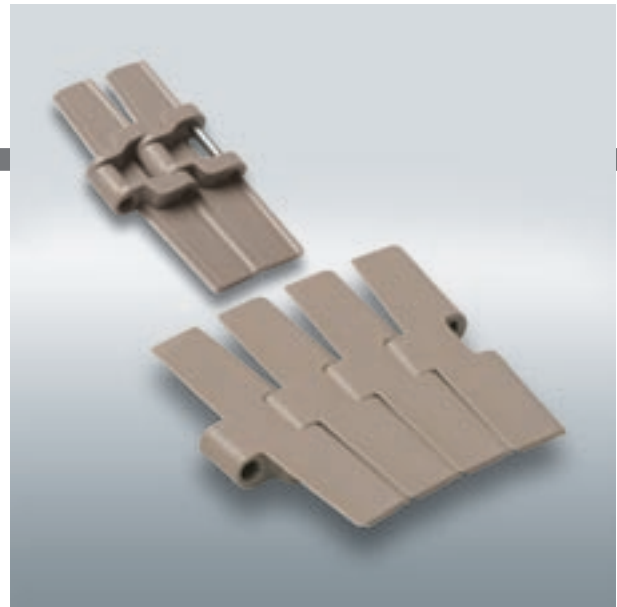
FliteTop®

SIDEFLEXING CHAIN

882 SERIES - BEVEL, HEAVY DUY 57 mm HINGE

- Reinforced top plate thickness 4,8 mm.

Reference	Standard Materials
882	LW
Pin Material: Cold rolled austenitic stainless steel.	



Dimension	mm	inches
P	38,1	1.5
M	57	2.244
L	9,5	.374
H	22,2	.874
E	8,7	.343
RD	40	1.575
GC (Straight)	60	2.362
GC (Curve)	60	2.362



Chain material
see page 12



Sprockets and Idler
wheels see pages 206:209



Corner tracks
see pages 283:284



Sprocket positioning
see page 299

882 (Sideflexing - Reinforced Top Plate Thickness - Heavy Duty 57 mm Hinge - Bevel)

MATERIAL	REGINA REF.	CHAIN WIDTH W		PLATE THICKNESS T		SIDEFLEXING RADIUS R		WORKING LOAD (25°C/77°F)		CHAIN WEIGHT	
		mm	inches	mm	inches	mm	inches	N	lbs	kg/m	lbs/ft
ACETAL RESIN (LW)	LW 882 K 4 ½	114,3	4.50	4,8	0.189	609,6	24	2800	630	1,92	1.29
	LW 882 K 7 ½	190,5	7.50	4,8	0.189	609,6	24	2800	630	2,32	1.56
	LW 882 K 10	254,0	10.00	4,8	0.189	609,6	24	2800	630	2,62	1.76
	LW 882 K 12	304,8	12.00	4,8	0.189	609,6	24	2800	630	2,85	1.91

Standard length: 3,048 m (10 feet)