



FliteTop®

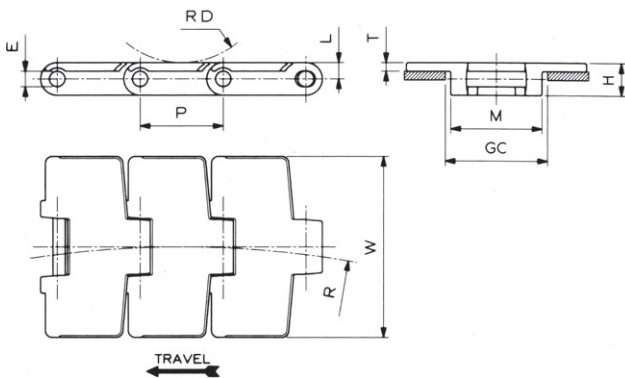
SIDEFLEXING CHAIN

880M SERIES - MAGNETIC

- 83.8 mm wide chains available: for gap reduction on 85 mm transversal pitch conveyors.

Reference	Standard Materials		
	LW	UP	DK
880M			

Pin Material: Magnetic stainless steel.



Dimension	mm	inches
P	38,1	1.5
M	42	1.654
L	7,6	.299
H	15,1	.594
E	7,1	.28
RD	40	1.575
GC (Straight)	44	1.732
GC (Curve)	44	1.732

880M (Sideflexing - Magnetic)



Chain material see page 12



Sprockets and Idler wheels see pages 202-205



Corner tracks see page 241



Sprocket positioning see page 299

MATERIAL	REGINA REF.	CHAIN WIDTH W		PLATE THICKNESS T		SIDEFLEXING RADIUS R		WORKING LOAD (25°C/77°F)		CHAIN WEIGHT	
		mm	inches	mm	inches	mm	inches	N	lbs	kg/m	lbs/ft
ACETAL RESIN (LW)	LW 880M K 3 ¼	82,6	3.25	4,0	0.157	500	19.685	2000	450	0,97	0.65
	LW 880M K 83,8	83,8	3.30	4,0	0.157	500	19.685	2000	450	0,98	0.66
ULTRA PERFORMANCE ACETAL RESIN (UP)	UP 880M K 3 ¼	82,6	3.25	4,0	0.157	500	19.685	2000	450	0,97	0.65
	UP 880M K 83,8	83,8	3.30	4,0	0.157	500	19.685	2000	450	0,98	0.66
REGINA DK	DK 880M K 3 ¼	82,6	3.25	4,0	0.157	500	19.685	2000	450	0,97	0.65
	DK 880M K 83,8	83,8	3.30	4,0	0.157	500	19.685	2000	450	0,98	0.66

Standard length: 3,048 m (10 feet)